

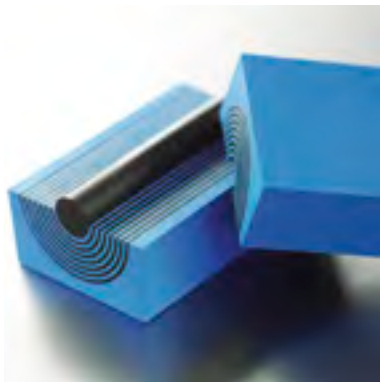


Plastic Pipe Transits



Stopping both fire and water

Roxtec provides flexible sealing solutions for plastic pipes. With our plastic pipe transits, you ensure safety, operational reliability and a good return on your investment.



Certified safety

Our sealing system for thermo-plastic piping is developed for constructions, such as decks and bulkheads. It ensures certified protection against risks caused by fire, smoke, gas or water pressure in accordance with official regulations and safety demands.

Reducing costs

Ship owners, ship builders and other contractors who want to

use plastic pipes appreciate the excellent fire protection and unique fire-stopping feature of our system. It facilitates the option to use plastic pipes, meaning lighter vessels, fuel-savings, less corrosion and reduced need for maintenance. Choosing Roxtec plastic pipe transits is a safe way of reducing the total cost.

- Flexible solutions
- Certified protection
- Developed for plastic pipes



Easy installation

Roxtec seals are extremely safe and easy to use. Thanks to the smart adaptability to different sizes of pipes, you can speed up installation.



Multidiameter™ by Roxtec

Our unique technology, based on seals with removable layers, allows adaptability to a wide range of different sizes of plastic pipes. You just peel off layers until the seal fits.

Efficient fire-stopper

Our seals are equipped with a fire-stopping material. In case of fire and melting pipes, it expands and makes sure that the fire does not spread

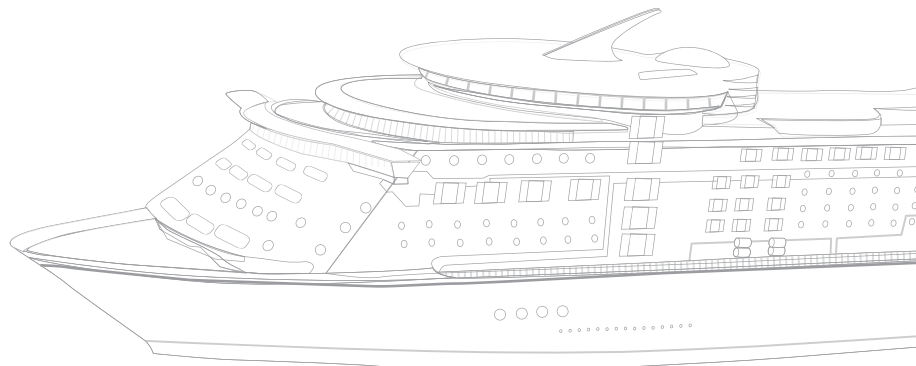
through the opening. Our solution makes it safe to choose plastic pipes.

Approved protection

Roxtec transits are approved for fire protection in A-class bulkhead and deck divisions. The sealing capacity is approved for water tightness and gas tightness. The transits are certified for use with thermoplastic pipes of a variety of materials and sizes.

FEATURES

- Fire-stopper
- Watertight and gas-tight
- Easy to inspect on site
- Multidiameter™



Roxtec RS PPS/S

SINGLE-SIDE SEAL



Installation from one side

The Roxtec RS PPS/S is a single-side seal for various thermoplastic pipes for openings in constructions like decks and bulkheads. The seal provides protection against fire, smoke and water. In case of fire, the penetration is blocked.

Compact and light weight

The small size of the seal and the short sleeve make the solution very compact and help minimizing the weight of the construction. The sleeve is welded or bolted to the steel division. The RS PPS/S is then inserted into the sleeve around the pipe.

RS PPS/S seal, with core, acid proof stainless steel fittings

| Seal | Art. No. | For plastic pipe | | For use with following sleeve: |
|----------------------|---------------|------------------|---------------|--------------------------------|
| | | (mm) | (in) | |
| RS PPS/S 31 AISI 316 | PPSS000003121 | 0+4-17 | 0+0.157-0.669 | SLRS 31 |
| RS PPS/S 43 AISI 316 | PPSS000004321 | 0+4-23 | 0+0.157-0.906 | SLRS 43 |
| RS PPS/S 50 AISI 316 | PPSS000005021 | 0+8-30 | 0+0.315-1.181 | SLRS 50 |
| RS PPS/S 68 AISI 316 | PPSS000006821 | 0+26-48 | 0+1.024-1.890 | SLRS 68 |
| RS PPS/S 75 AISI 316 | PPSS000007521 | 0+26-48 | 0+1.024-1.890 | SLRS 75 |

RS PPS/S seal, without core, acid proof stainless steel fittings

| Seal | Art. No. | For plastic pipe | | For use with following sleeve: |
|---------------------------|---------------|------------------|-------------|--------------------------------|
| | | (mm) | (in) | |
| RS PPS/S 100 woc AISI 316 | PPSS000010021 | 48-70 | 1.890-2.756 | SLRS 100 |
| RS PPS/S 125 woc AISI 316 | PPSS000012521 | 66-98 | 2.598-3.858 | SLRS 125 |
| RS PPS/S 150 woc AISI 316 | PPSS000015021 | 93-119 | 3.661-4.685 | SLRS 150 |



Saving time

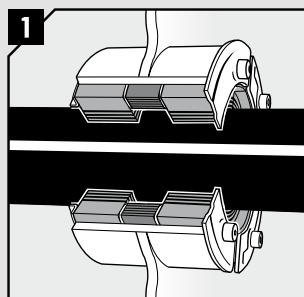
Plastic pipes are easy to handle, and transits like the Roxtec RS PPS/S are developed to simplify and speed up the installation phase even more.

User-friendly

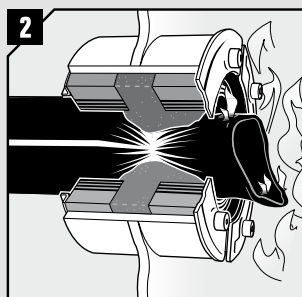
All parts are integrated, and in most cases there is no need for additional insulation. This enables trouble-free installations, and ensures that the special fire-stopping material is properly installed. You eliminate the risk of errors, and the product marking facilitates verification.

How it works

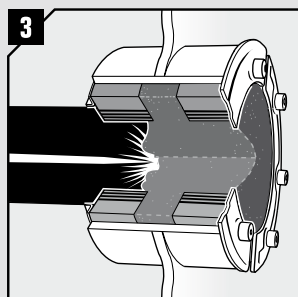
The example shows the RS PPS/S in action. The functionality of the RS PPS and SE PPS seals is fundamentally the same.



The Roxtec RS PPS/S seals around the thermoplastic pipe against leakage of water and gas through the steel division. Inside the seal, we have added a special fire-stopping material.



This material will expand and close the middle void of the pipe whenever exposed to high temperatures, such as during a fire.



Should a fire occur and the plastic pipe start to burn and melt, the opening will close completely to prevent fire and smoke from spreading through the bulkhead or deck.

Roxtec RS PPS

BACK-TO-BACK SEAL



Blocking flames

The Roxtec RS PPS is a back-to-back sealing solution for use with thermoplastic pipes in constructions, such as decks and bulkheads. The seal ensures complete blocking of smoke, flames and water through the opening of the pipe in case of fire.

All in one kit

The Roxtec RS PPS kit consists of two RS seals and one intumescent sealing strip. The seal is approved for a wide range of thermoplastic pipes and intended for use with Roxtec SL PPS sleeves.

RS PPS seal, with core, acid proof stainless steel fittings

| Seal | Art. No. | For plastic pipe | | For use with following sleeve: |
|--------------------|---------------|------------------|---------------|--------------------------------|
| | | (mm) | (in) | |
| RS PPS 31 AISI 316 | PPS0000031021 | 0+4-17 | 0+0.157-0.669 | SLPPS 31 |
| RS PPS 43 AISI 316 | PPS0000043021 | 0+4-23 | 0+0.157-0.906 | SLPPS 43 |
| RS PPS 50 AISI 316 | PPS0000050021 | 0+8-30 | 0+0.315-1.181 | SLPPS 50 |
| RS PPS 68 AISI 316 | PPS0000068021 | 0+26-48 | 0+1.024-1.890 | SLPPS 68 |
| RS PPS 75 AISI 316 | PPS0000075021 | 0+26-48 | 0+1.024-1.890 | SLPPS 75 |

RS PPS seal, without core, acid proof stainless steel fittings

| Seal | Art. No. | For plastic pipe | | For use with following sleeve: |
|-------------------------|---------------|------------------|-------------|--------------------------------|
| | | (mm) | (in) | |
| RS PPS 100 AISI 316 woc | PPS0000100021 | 48-70 | 1.890-2.756 | SLPPS 100 |
| RS PPS 125 AISI 316 woc | PPS0000125021 | 66-98 | 2.598-3.858 | SLPPS 125 |
| RS PPS 150 AISI 316 woc | PPS0000150021 | 93-119 | 3.661-4.331 | SLPPS 150 |
| RS PPS 175 AISI 316 woc | PPS0000175021 | 119-147 | 4.685-5.787 | SLPPS 175 |
| RS PPS 200 AISI 316 woc | PPS0000200021 | 138-170 | 5.433-6.693 | SLPPS 200 |

RS PPS is available in sizes up to RS PPS 400 for plastic pipes up to 315 mm.

Roxtec sleeves



For a complete solution

The Roxtec plastic pipe seals are to be installed in Roxtec sleeves. The sleeves are developed and designed to make the round Roxtec seal complete and geometrically correct. The shorter sleeves fit the RS PPS/S, while the longer ones are used with the RS PPS back-to-back seal.

The sleeves are also available with a pre-holed flange for attachment by bolting, for example where hot-work is not allowed, or by casting. For information about sleeves with flange, please visit www.roxtec.com

| Sleeve | External dimensions | | Length | | Art. No | |
|---------------------|---------------------|--------|--------|-------|---------------|---------------|
| | Ø (mm) | Ø (in) | mm | in | | |
| for RS PPS/S | | | | | | |
| SLRS 31 | 40 | 1.575 | 35 | 1.378 | ASL1000310012 | ASL1000310021 |
| SLRS 43 | 52 | 2.047 | 65 | 2.559 | ASL1000430012 | ASL1000430021 |
| SLRS 50 | 63 | 2.480 | 65 | 2.559 | ASL1000500012 | ASL1000500021 |
| SLRS 68 | 83 | 3.268 | 65 | 2.559 | ASL1000680012 | ASL1000680021 |
| SLRS 75 | 89 | 3.504 | 65 | 2.559 | ASL1000750012 | ASL1000750021 |
| SLRS 100 | 114 | 4.488 | 65 | 2.559 | ASL1001000012 | ASL1001000021 |
| SLRS 125 | 140 | 5.512 | 65 | 2.559 | ASL1001250012 | ASL1001250021 |
| SLRS 150 | 164 | 6.457 | 65 | 2.559 | ASL1001500012 | ASL1001500021 |
| for RS PPS | | | | | | |
| SLPPS 31 | 42 | 1.654 | 156 | 6.142 | 5ASL000005820 | |
| SLPPS 43 | 52 | 2.047 | 156 | 6.142 | 5ASL000005500 | |
| SLPPS 50 | 60 | 2.362 | 156 | 6.142 | 5ASL000003416 | |
| SLPPS 68 | 75 | 2.953 | 156 | 6.142 | 5ASL000004742 | |
| SLPPS 75 | 89 | 3.500 | 156 | 6.142 | 5ASL000003445 | |
| SLPPS 100 | 114 | 4.488 | 156 | 6.142 | 5ASL000003519 | |
| SLPPS 125 | 140 | 5.512 | 156 | 6.142 | 5ASL000003446 | |
| SLPPS 150 | 168 | 6.614 | 156 | 6.142 | 5ASL000003417 | |
| SLPPS 175 | 185 | 7.283 | 156 | 6.142 | 5ASL000003769 | |
| SLPPS 200 | 219 | 8.622 | 156 | 6.142 | 5ASL000005458 | |

Roxtec SE PPS

EXTENSION FRAME



Multi-pipe sealing

The Roxtec SE PPS is an accessory for fire-proof installation of several plastic pipes through Roxtec S/SF type frames. The frames allow several pipes in the same opening and are approved for different plastic materials. S/SF type frames and accessories are ordered separately.

| Frame | External dimensions (D=100 mm) | | Weight | | Art. No. |
|-----------------|--------------------------------|-----------------|--------|-------|---------------|
| | HxW (mm) | HxW (in) | (kg) | (lb) | |
| SE PPS 2x1 galv | 195 x 215 | 7.677 x 8.465 | 0.8 | 1.653 | 5PPSE00003323 |
| SE PPS 2x2 galv | 195 x 345 | 7.677 x 13.583 | 1.2 | 2.668 | 5PPSE00003324 |
| SE PPS 2x3 galv | 195 x 476 | 7.677 x 18.740 | 1.7 | 3.704 | 5PPSE00005088 |
| SE PPS 2x4 galv | 195 x 606 | 7.677 x 23.858 | 2.1 | 4.718 | 5PPSE00005089 |
| SE PPS 3x1 galv | 254 x 155 | 9.999 x 6.102 | 0.7 | 1.543 | 5PPSE00003320 |
| SE PPS 4x1 galv | 254 x 215 | 9.999 x 8.465 | 0.9 | 1.984 | 5PPSE00003325 |
| SE PPS 4x2 galv | 254 x 345 | 9.999 x 13.583 | 1.5 | 3.197 | 5PPSE00003326 |
| SE PPS 4x3 galv | 254 x 476 | 9.999 x 18.740 | 2.0 | 4.431 | 5PPSE00003327 |
| SE PPS 4x4 galv | 254 x 606 | 9.999 x 23.858 | 2.6 | 5.644 | 5PPSE00005090 |
| SE PPS 5x1 galv | 312 x 155 | 12.283 x 6.102 | 1.0 | 2.094 | 5PPSE00003321 |
| SE PPS 6x1 galv | 312 x 215 | 12.283 x 8.465 | 1.1 | 2.315 | 5PPSE00003328 |
| SE PPS 6x2 galv | 312 x 345 | 12.283 x 13.583 | 1.7 | 3.748 | 5PPSE00003329 |
| SE PPS 6x3 galv | 312 x 476 | 12.283 x 18.740 | 2.4 | 5.181 | 5PPSE00003330 |
| SE PPS 6x4 galv | 312 x 606 | 12.283 x 23.858 | 3.0 | 6.614 | 5PPSE00003331 |

We support you globally



Sharing our knowledge

Roxtec is more than a supplier. Our sales and support staff around the world help customers find their optimal solution. Our knowledge, acquired through years of work in the field, enables us to guide you to a solution that suits your needs.

We help ensure quality

Our extensive R&D resources, with design and engineering departments as well as labs for advanced tests, give us the opportunity to continuously develop and improve our products, services and solutions. We provide tests, certificates and documentation for transferring knowledge within your organization.



Installation training

To ensure the correct use of our system, we also provide product installation training on site. At our website, www.roxtec.com, we have collected useful information for staff involved in the assembly and installation of the Roxtec sealing system. Instructions and videos can be viewed or downloaded for free.

The world's most available modular seal

Roxtec solutions are available worldwide through our network of local suppliers. This means fast deliveries from local stocks in more than 70 markets. It also means direct support from local staff on site.



Among our customers are:

Aker Yards, Benetti, Carnival Cruise Corporation, Daewoo Heavy Industries, Dalian Shipyard, Fincantieri, HDW, Hyundai Heavy Industries, Jinling Shipyard, Mitsubishi Heavy Industries, Perini Navi, Royal Caribbean Cruise Line, Samsung Heavy Industries, UK Navy, US Navy.



Local presence worldwide

Roxtec is the world-leading provider of flexible sealing solutions for cable and pipe penetrations. Our adaptability solution, Multidiameter™, is based on modules with removable layers. It seals perfectly, regardless of the dimension of the cable or pipe. We are present all over the world in order to ensure product availability as well as quick support and supply.

Sweden, Roxtec International AB, HQ
Argentina, INGIAR Representaciones SRL
Australia, Roxtec Australia Ltd
Belgium, Roxtec b.v.b.a/s.p.r.l
Brazil, Roxtec Latin América Ltda
Chile, FACOR Ltda
China, Roxtec International Trading (Shanghai) Co. Ltd
Croatia, Roxtec d.o.o.
Czech Republic, Roxtec CZ s.r.o
Denmark, Roxtec ApS
Finland, Roxtec Finland Oy
France, Roxtec France
Germany, Roxtec GmbH
Hungary, Glob-Prot Trade and Service Ltd
India, Roxtec India Pvt Ltd
Italy, Roxtec Italia S.r.l
Japan, Roxtec Japan K.K
Kazakhstan, Company ECOS
Lithuania, SWELBALT
Mexico, Roxtec de México, S.A. de C.V
Nigeria, Structured Resource Business Ltd
The Netherlands, Roxtec BV
Norway, Roxtec AS
Peru, Synixtor S.A.C
Poland, Pionet Sp.zo.o
Portugal, Glacis, LDA
Russia, Roxtec RU
Romania, Roxtec RO s.r.l.
Singapore, Roxtec Singapore PTE Ltd
South Africa, Roxtec Africa (PTY) Ltd
South Korea, Roxtec Korea
Spain, Roxtec Sistemas Pasamuros S.L
Switzerland, Agro AG
UAE, Roxtec Middle East F.Z.E
UK/Ireland, Roxtec Ltd
USA/Canada, Roxtec Inc

For other markets and detailed contact information, please visit www.roxtec.com



Roxtec International AB
 Box 540, 371 23 Karlskrona, SWEDEN
 PHONE +46 455 36 67 00, FAX +46 455 820 12
 EMAIL info@roxtec.com, www.roxtec.com